

# News@tim

University of Hawaii School of Travel Industry Management

## Dean's Message

Aloha

Welcome to this special issue of our newsletter devoted to our recent Legacy celebration. The evening was an outstanding success. We very much appreciate having the major travel and tourism stakeholders join us for this event.

On behalf of the School of Travel Industry Management I wish to thank all sponsors and contributors for their very generous support our school. I also wish to sincerely thank our alumni for their continuing

support and efforts in making this evening an outstanding success. Without the alumni it would be difficult for us to fund some of our special programs.

The evening was an excellent way to recognize the significant contributions Peter Schall has made to our industry in general and to the TIM School in particular. Peter's role as Chair of our Advisory Council is important in helping the school to move forward and we are very happy that he has agreed to continue working with us.

The evening helped establish the Peter Schall Scholarship in Resort Management and the TIM Annual Resort Management Lecture Series, which also is being supported by Hilton Hawaiian Village.

We look forward to next year's event as we celebrate 40 years of leadership and plan for 40 years of continued excellence.

With warm regards,

Walter Jamieson



## TIM School Annual Event Honors Hotel "Legacy" and Raises \$60,000 for Programs

Over 300 guests and supporters of the University of Hawaii's School of Travel Industry Management honored retired Hilton executive Peter H. Schall on November 1 at the School's

"Seventh Annual Celebrate a Legacy in Tourism" fundraising event held at the Hilton Hawaiian Village Beach Resort & Spa's Coral Ballroom. Over \$60,000 was raised for scholarships,

mentorship programs, awards and the development of a Resort Management and Planning curriculum.

Each year, the School of Travel Industry Management and its alumni association, TIM International, Inc., pay tribute to an individual who has made significant and long-term contributions to the travel industry. Peter Schall, this year's honoree, recently retired as senior vice president

(cont. p2)



Gary Seibert, Michelle Schall, Peter Schall, David & Wendie McClain, Charlotte Schall

7<sup>th</sup> Annual Celebrate A Legacy in Tourism



**SPECIAL EDITION**

### Inside this issue:

TIM Students "Work" Legacy	2
Legacy Honoree Peter Schall	3
Alumni Hall of Honor Inducted	4
Music Student Performs	4
School of Theatre and Dance Entertains	5
Mahalo to Sponsors	5
Mahalo to Auction Donors	6
Acknowledgements	6



## Legacy Event (continued)



TIM graduates, now working at Starwood Resorts—Victoria Peters, Marimichael Walker, Lauren Rawlins

of Hilton's Hawaii region, and managing director for the Hilton Hawaiian Village. Schall's vast contributions to Hawaii's visitor industry spanned nearly 20 years.

TIM International also inducted Class of '79 graduate Dean T. Nakasone into its Alumni Hall of Honor.

TIM Students took advan-

tage of the opportunity to meet and mingle with the tourism industry's top executives and supporters as they provided management support.

The event showcased entertainment provided by students of the Uni-

versity of Hawaii's School of

Music and the School of Theatre and Dance. Other performers included Halau Hula 'O Hokulani and the Hilton Hawaiian Village Guards.

In attendance at this year's Legacy

event were past "Legacy in Tourism" honorees TIM School Dean Emeritus Chuck Y. Gee, Mr. John Brogan and Governor George Ariyoshi. Other past honorees include Mr. Robert H. Burns, Ambassador L.W. "Bill" and Mrs. Jean Lane and Dr. Richard R. Kelley.



Dean Nakasone, Ernest Nishizaki

*TIM Students took advantage of the opportunity to meet and mingle with the tourism industry's top executives and supporters.*



## TIM Students "Work" Legacy Event

Forty-two TIM students, dressed in their business best, came out to help at the Legacy event greeting and registering guests, assisting

with auction set-up and sales and soliciting lucky number donations. Thank you to the following students for volunteering their

time and their management and marketing skills to make the 2005 Legacy fundraising event a success!

### LEGACY VOLUNTEERS

Danielle Adams, Venus Bravo, Catherine Casio, Donna Chan, Yuyun Chang, Sandy Chiu, Emily Chung, Kyung Min Chung, Samantha Couper, Shaiyenne Dar, Dan Farmer, Wing Nga Fung, Sarah Ming Kar Ho, Ivan Hou, Jacquie Jensen, Hanako Kawada, Jeremy Ke, Jesslyn Kwa, Pearly Lai, Kathy Lam, Pei Hsuan Lee (Peggy), Kristin Maus, Alex Milski, Rena Nishikawa, Orié Onchi, Katie Rusk, Kayla Sakumoto, Stefanie Schroeder, Alex Shortsleeve, Kory Strona, Michiko Tachibana, Marie Watanabe, Candy Wong, Gary Wong, Andrea Young



## 2005 Legacy Honoree, Peter H. Schall

Legacy honoree, Peter H. Schall, graciously accepted his award before 300 distinguished guests and TIM School supporters at the Celebrate a Legacy in Tourism event held on Nov. 1. Longtime friend and fellow German countryman, Hans Strasser entertained guests with stories of Peter and his impact on the hotel scene in Hawaii. Former Hilton employees Erika Lacro and Kawehi Sellers, both now working at the TIM School, shared how they were inspired by Peter and his leadership style.

Peter began his career at Hilton and is a 46-year veteran of the hospitality industry. Recently retired as Senior Vice President Hawaii Region for Hilton Hotels Corporation, Peter oversaw the general operations of Hilton's hotels in Hawaii which consists of the 2,860-room Hilton Hawaiian Village, the 1,240-room Hilton Waikoloa Village on Hawaii's Big Island, and the 313-room Doubletree Alana Hotel-Waikiki.

As Managing Director, Peter was directly responsible

for the Hilton Hawaiian Village, the largest hotel in the Hilton Hotels Corporation chain of hotels. Schall joined Hilton Hawaiian Village in 1986 and held the position of Gen-



Ren Hirose, Peter Schall, Dean Walter Jamieson

eral Manager until 1994. During that time, he was responsible for the successful completion of the \$100 million master plan architectural renewal of this world-class resort. Subsequently he was named Area Vice President, then Senior Vice President. Most recently he further re-positioned the resort with the addition of Kalia Tower; including the world-class M a n d a r a S p a (independently owned and operated), and the Bishop Museum Collection at the Hawaiian

Arts and Culture Center.

In addition to his duties at the Hilton, Peter found the time to serve on numerous community boards such as the Hawaii Business Roundtable, the Waikiki Improvement Association, the Aloha Festivals, the Hawaii Hotel Association, the Friends of Hawaii Charities and the Native Hawaiian Hospitality Association. His dedication, passion and belief in the success of the hospitality industry in Hawaii remain even after his retirement. He

currently serves as the chairman of the TIM School Advisory Council. His influence and leadership continue to shape the industry.

Mahalo for your outstanding contribution and service. Congratulations Peter!

*"His dedication, passion and belief in the success of the hospitality industry in Hawaii remain even after his retirement."*



Peter Schall



Hans Strasser



Kawehi Sellers talks about her mentor Peter Schall

## '79 Grad Inducted into Alumni Hall of Honor

TIM and TIM International, the school's alumni association, inducted '79 grad Dean T. Nakasone, into it's 2005 Alumni Hall of Honor at this year's Legacy event. Dean's career began as a management trainee at the former Sheraton Waieka Village Hotel in Hilo, and today he is the General Manager of the OHANA Waikiki Beachcomber.

Working in the travel industry for more than 25 years, Dean has held various key management positions at hotels such as the Sheraton Moana Surf-rider Hotel, the Halekulani Hotel and the Hawaii Prince Hotel. In 1997 Dean

was appointed General Manager of the Outrigger Prince Kuhio Hotel. This assignment led Dean to take on the challenging position of Director of Revenue Management for the

new OHANA Hotels and Resorts, a part of the Outrigger Family of Island Hotels.

In addition to his management duties, Dean found time to lecture on Hotel Operations at Kapiolani Community College. At KCC Dean served on the UH KCC



TIM graduates— Ren Hirose, Dean Nakasone, Paul Yokota

Advisory Committee for Hotel and Restaurant Operations. He also holds the prestigious CHA-Certified Hotel Administrator designation which he earned

from the American Hotel and Lodging Educational Institute. Dean has served for many years on the TIM International Board of Directors, and is active with the Iolani School Alumni Association.

Dean has been a natural leader all of his life. He holds the distinction of being the first President of TIMSA, the Travel Industry Management Student Association, from 1978-1979. His style of leadership is to set the example, and he works to inspire his co-workers, clients and friends, to bring out their best. His biggest

sense of satisfaction comes from seeing people that he has worked with succeed and get promoted into bigger and better positions. Congratulations Dean!



Holly, Natalie, Jonathan and Dean Nakasone

*Dean holds the distinction of being the first President of TIMSA, the Travel Industry Management Student Association.*

## UH Music Student Serenades Guests

Chris Cerna, a University of Hawaii School of Music student, serenaded Legacy guests



as they perused the auction displays. This multitalented music major is currently on a scholarship from the University of Hawaii, the Presser Foundation and Ho'Opono, training to be a classical pianist. He also plays the mandolin, banjo, bass guitar, Native American flute, accordion, samishen, vibraphone, a variety of recorders and the fiddle, and enjoys composing his own music.

Quite accomplished already, Chris has won piano competitions at the national and state

level, and has recorded 9 CD's. He has also earned the rank of Eagle Scout, the highest honor in the Boy Scouts of America.

This is quite an achievement for a young man who has had to overcome cancer that caused him to lose his eyesight at the age of eighteen months, the same affliction that led to the death of his twin brother Chuck at the age of five years.

Thank you Chris for sharing your talent with us!

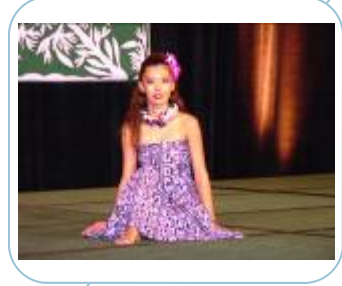


Dean Nakasone, Walter Jamieson

# University Students Entertain at Legacy

A talented cast of performers from the University of Hawaii School of Theatre & Dance pro-

vided the evening's entertainment. The select group of undergraduate and graduate students presented their diverse repertoire of dance and theatrical selections while guests dined. Thank you to the evening's performers!



Ellen Cho, Tiana Debell, Sarah Hartley, Cielle Kiewit, Allison Lee, Arturo Mariano, Amy Miner, Tamie Onchi, Kiplinn Sagmiller, Robert Wyllie and Marissa Yogi

# Mahalo to Our Sponsors

Your generous support made this event a success!

### Gold

- Conrad Hong Kong
- First Hawaiian Bank
- Group 70 International Inc.
- Hawaiian Telcom
- Hilton Hawaiian Village Beach Resort & Spa
- Outrigger Enterprises, Inc.
- San Francisco Hilton & Towers
- The Waldorf=Astoria
- United Airlines

### Silver

- |   |                   |   |
|---|-------------------|---|
| Alcon & Associates                      | Cades Schutte LLP | HTH Corporation                           |
| Continental Airlines                    |                   | Hyatt Regency Waikiki                     |
| Halekulani Corporation                  |                   | Kitty Hawk, Inc.                          |
| Harrah's Las Vegas                      |                   | Marriott International, Inc.              |
| Hawaii Hotel & Lodging Association      |                   | NCL America                               |
| Hawaii Prince Hotel Waikiki & Golf Club |                   | Outrigger Enterprises, Inc.               |
| Hawaii Visitors & Convention Bureau     |                   | Remedy Intelligent Staffing               |
| Hilton Las Vegas                        |                   | Starwood Hotels & Resorts/Kyo-Ya Co. Ltd. |



Legacy Honoree Peter Schall poses with Mistress of Ceremonies Miss Hawaii Malika Dudley



Chuck Gee, David McClain



Raina Matsui, Valerie Chinen, Marie Kumabe

# Mahalo Nui Loa to Our Auction Donors

Ala Moana Hotel  
Ala Moana Shopping Center  
Aloha Airlines  
Bead It Inc.  
Better Brands  
Big City Diner  
Big Island Candies  
Bora Bora Nui Resort & Spa  
Castle Resorts & Hotels  
Centerplate  
Conrad Hong Kong  
Continental Airlines  
Creative Holidays  
Dancing Cat Records  
Dave & Busters  
Diamond Head Theatre  
Doubletree Alana Hotel Waikiki  
Doubletree Hotel Sonoma  
Dream Cruises  
Duke's Canoe Club Waikiki  
Enterprise Rent-A-Car  
Fairmont Orchid Hawaii  
Four Seasons Resort Hualalai  
Four Seasons Resort Maui at Wailea  
Germaines Luau Inc.  
Gold's Gym  
Grand Hyatt Kauai  
HTH Corporation  
Hapuna Beach Prince Hotel  
Harrah's Entertainment Inc.  
Hawaii Prince Hotel & Golf Club  
Hawaii Theatre Center  
Hawaiian Airlines  
Hawaiian Waters Adventure Park  
Hilo Hattie  
Hilton San Francisco  
Hilton Waikoloa Village  
Hong Kong Harbor View Restaurant  
Horizon Lines  
Hyatt Regency Waikiki Resort & Spa  
Ice Palace  
Island Air  
Jackie's Kitchen  
John Dominis  
Kaanapali Beach Hotel  
Kapalua Land Company, Ltd.  
Keiki Kuts  
Kua Aina Sandwich Shop  
Kyo-ya Restaurant  
Las Vegas Hilton  
Le Sheraton Centre Hotel  
Let's Eat Hawaii  
Lisa Rose Doll House & Tea Room  
Louis Vuitton  
L'Uraku Restaurant  
Makena Resort & Golf Courses  
Mandarin Oriental New York  
Manoa Valley Theatre

Market City Shopping Center  
Marsha Nadalin Salon & Spa  
Manoa Valley Theatre  
Maui Divers of Hawaii Ltd.  
Maui Prince Hotel  
Meadow Gold Dairies  
Michel's at the Colony Surf  
Mountain Apple Company, Inc.  
Ocean Club  
Omni San Francisco  
Palace Hotel San Francisco  
Paradise Cove Luau  
Paris Las Vegas  
Paul Brown Salon & Day Spa  
Phil's Tux Shops  
Plantation Café  
Plantation Course, Kapalua  
Polynesian Cultural Center  
Pono Kai Resort Kauai  
Princeville Resort Kauai  
Radisson Waikiki Prince Kuhio  
Rainbowtique, University of Hawaii  
Roy's Restaurants  
Sheraton Boston  
Sheraton Centre Toronto  
Sheraton Hotel Tahiti  
Sheraton Kauai Resort  
Sheraton Keauhou Bay Resort & Spa  
Sheraton Maui Resort  
Sheraton Moana Surfrider  
Sheraton Moorea Lagoon Resort & Spa  
Sheraton New York Hotel & Towers  
Sheraton San Diego Hotel & Towers  
Sheraton Seattle Hotel & Towers  
Sheraton Waikiki Hotel  
Sheraton Wild Horse Pass Resort & Spa  
St. Regis San Francisco  
The Contemporary Museum  
Trellisses Restaurant  
Tri-Star Restaurant Group  
Tsuyoshi & Carole Sakata  
Turtle Bay Resort  
UH Office of Intercollegiate Athletics  
United Airlines  
Victoria Ward Centers  
W Honolulu Hotel  
W San Diego  
W Seattle Hotel  
Waikoloa Marriott Resort  
Waikiki Beach Marriott  
Wailea Golf LLC  
Wallace Theaters  
Watanabe Floral, Inc.  
Westin Bayshore, Vancouver  
Westin Diplomat Resort & Spa  
Westin Horton Plaza, San Diego  
Westin Kaanapali Ocean Resort & Villas  
Young Laundry & Dry Cleaning

## Acknowledgements

**Many thanks to all of you for your generous gifts of time and resources.**

Charley's Taxi  
Christopher Jamieson  
Clinton Inouye  
David McClain  
Deborah Fitzgerald  
DMM Enterprises  
Electric Pencil  
Erika Lacro  
Flora Dec  
Floral Resources Hawaii  
Glenn Perry  
Greeters of Hawaii  
Halau Hula 'O Hokulani  
Hans Strasser  
Hilton Hawaiian Village  
HHV Guards  
HNL Travel Associates  
ITS PHOTO TIME  
Jennifer Thompson  
Jon Ordenstein  
Johnson Choi  
Justin Takaki  
Kawehi Sellers  
Kona Paradise Candies  
Kristi Bates  
Lee-Ann Choy  
Lois Sismar  
Lora Gallagher  
Malika Dudley  
Marie Kumabe  
Mary Kaliko Thronas  
Michelle Jamieson  
Noel G. Trainor  
Pacific Rim Concepts LLC  
Paul Yokota  
Peter Schall  
Presentation Services  
Ramsay Taum  
Ren Hirose  
Susan Smith  
Tia Ikeno  
TIM School Administration  
TIM School Student Volunteers  
UH School of Music  
UH School of Theatre & Dance  
Village Flowers  
Wailana Coffee House  
Walter Jamieson